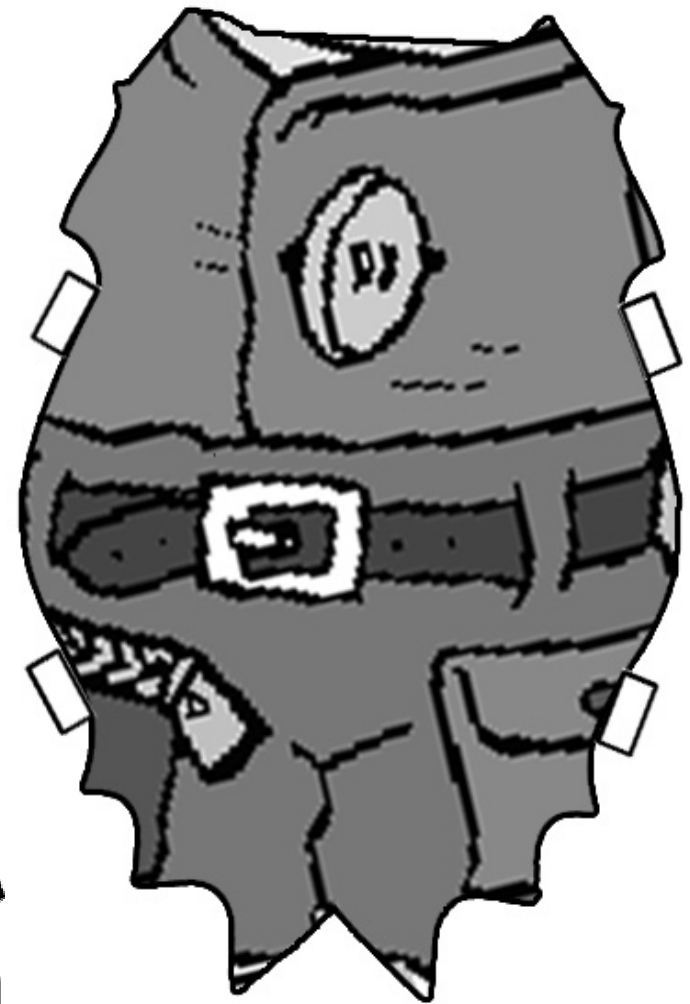
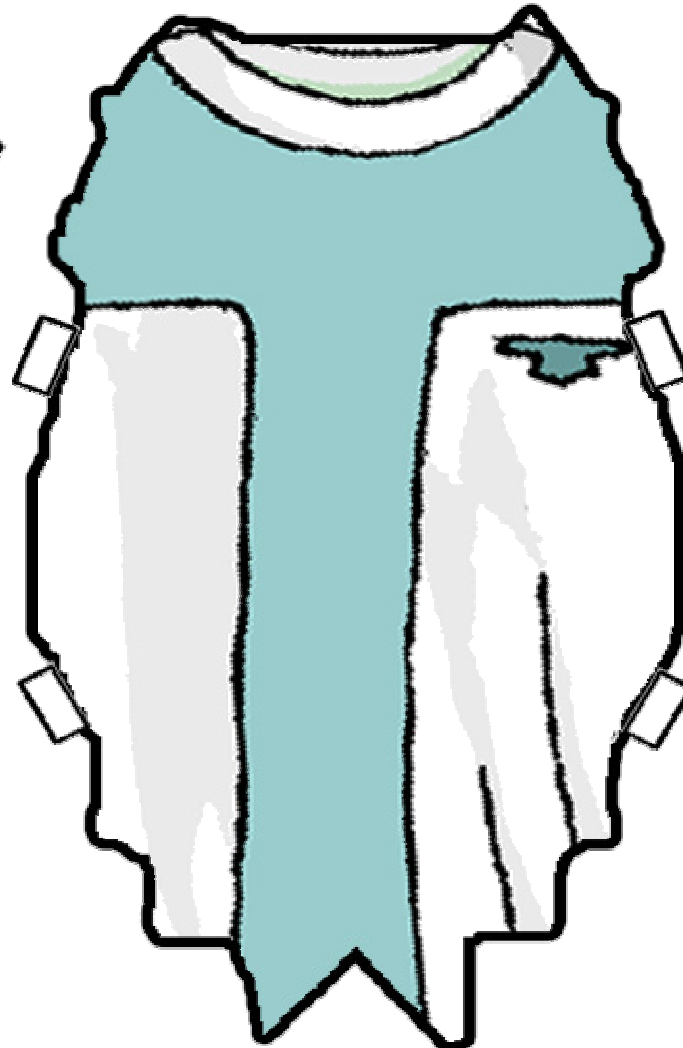


# God Made Me! Clothing

**Directions:** Cut out the God Made Me! figures and color them. Cut out the outfit of your choice. Then, fold the tabs or glue clothes onto your person.



Notice how many special parts you have. They are all important and useful. However, some are private and should be treated as God intended.

What can you do with your legs?

Can you touch your tongue to your elbow? To your nose?

Why do you think different parts of the body are used to do different things?